



PNY Attaché USB Flash Drive

Limited 1 Year Warranty

PNY Technologies, Inc. ("PNY"), manufacturer of your new PNY Attaché (the "product"), warrants the product to be free from defects in materials and workmanship for a period of 1 year as sold to the original purchaser ("purchaser"), subject to all the terms and conditions hereunder. This warranty is not assignable.

PNY's sole obligation under this warranty is to replace or, at its option, to repair, free of charge, all the product's defective parts. This warranty applies only on the condition that the product has been installed, maintained, and operated under conditions of normal use and in accordance with the installation guide provided herewith. The provisions of this warranty shall not apply if, in PNY's judgment, the product has been subject to misuse or neglect, improper installation, damaged in an accident, or repaired or altered in any way that adversely affects its performance or reliability. The product is not authorized for use as a critical component in life support devices or systems without the prior written consent of a duly authorized officer of PNY.

THIS WARRANTY IS IN LIEU OF ANY OTHER WARRANTIES, EITHER EXPRESS OR IMPLIED, INCLUDING WITHOUT LIMITATION ANY WARRANTIES OF MERCHANTABILITY OR FITNESS FOR A PARTICULAR PURPOSE OR TITLE AGAINST INFRINGEMENT, WHICH OTHER WARRANTIES ARE EXPRESSLY EXCLUDED AND DISCLAIMED. PNY SHALL NOT BE LIABLE FOR LOSS OF PROFITS OR ANY SPECIAL, INCIDENTAL OR CONSEQUENTIAL DAMAGES WHICH PURCHASER MAY SUSTAIN, EVEN IF PNY HAS BEEN ADVISED OF THE POSSIBILITY OF SUCH LOSSES OR DAMAGES. IN NO EVENT SHALL PNY'S LIABILITY EXCEED THE PURCHASE PRICE OF THE DEFECTIVE PRODUCT.

SOME STATES DO NOT ALLOW THE EXCLUSION OR LIMITATION OF INCIDENTAL OR CONSEQUENTIAL DAMAGES, SO THESE LIMITATIONS MAY NOT APPLY TO YOU. THIS WARRANTY GIVES YOU SPECIFIC LEGAL RIGHTS AND YOU MAY ALSO HAVE OTHER RIGHTS WHICH VARY FROM STATE TO STATE.

Warranty coverage requires proof of purchase documentation evidencing the date of purchase (sales receipt or invoice). To obtain warranty service during the warranty period, contact your place of purchase or write to PNY at 299 Webro Road, Parsippany, NJ 07054 to find the PNY dealer closest to you.

FOR WARRANTY CONFIRMATION AND PRODUCT REGISTRATION VISIT US AT <http://www.pny.com>. THIS WARRANTY SHALL NOT BE EXTENDED, ALTERED OR VARIED EXCEPT BY A WRITTEN INSTRUMENT DULY SIGNED BY PNY.

PNY Technologies, Inc. shall not be liable for technical or editorial errors or omissions contained herein; nor for incidental or consequential damages resulting from the furnishing, performance, or use of this manual.



TABLE OF CONTENTS

1 INTRODUCTION..... 3

1.1 The Attaché 3

1.2 Technical Specifications 4

2 HOW TO INSTALL 5

2.1 Windows 98/98SE 5

2.2 Windows 2000/ME/XP 8

2.3 Mac OS 8.6/9.x/10.0.x/10.1.x/10.2.x 8

2.4 Linux Kernel 2.4.x 8

3 HOW TO USE THE ATTACHE 9

4 FAQs 10

HOW TO CONTACT US 11



1 INTRODUCTION

1.1 The Attaché

If you want to transfer data from one computer to another, what do you do? Do you take one or more boxes of floppy disk with you or do you take your hard drive with you? You may send e-mail, but it takes a lot of time to download if you have a large amount of data.

Now, here is a solution, the PNY Attaché (USB Flash Drive). Accessing and transporting data has never been easier with the Attaché. The Attaché is a portable, removable hard disk drive with USB connection that's plug and play. Simply plug into any USB port and the computer will automatically detect it as a flash disk drive. Now you can read, write, copy, delete and move data from your hard disk drive to the Attaché or from the Attaché to your hard disk drive. You can even play MP3 files, run applications or view videos directly from the Attaché.

The Attaché is so compact that you can carry it with you anywhere and hardly notice its existence. It also comes in various storage capacities of 64MB, 128MB, 256MB, and 512MB.

Now, you don't have to carry a laptop computer with you to work, if you have access to a computer. The Attaché does not require any battery; it does not need any software or cable and is compatible with USB enabled desktop and laptop computers.

No more carrying around work in a laptop computer and no more floppy disks are required.

PNY Attaché is your solution; PNY Attaché is the future.

Thank you for choosing PNY Attaché – Let Our Memory Capture Your Memories™.



1.2 Technical Specifications

- **Power Supply**
 - USB bus-powered
 - No external power required
- **Power Consumption**
 - Standby: 790 μ A (typical), 1 mA (max)
 - High Speed: 170 mA (typical), 190 mA (max)
 - Full Speed: 140 mA (typical), 150 mA (max)
- **Performance (Read/Write)**
 - High Speed¹: Read: Up to 9 MB/sec, Write: Up to 7MB/sec
 - Full Speed: Read: Up to 1 MB/sec, Write: Up to 0.85 MB/sec
- **Operating Systems Supported**
 - Windows 98 SE², 2000, ME, XP
 - Mac OS: 9.x, 10.x, 10.1.x, 10.2.x
 - Linux 2.4.x
- **Capacity**
 - 128MB, 256MB, 512MB
- **LED Indicator**
 - Slow flashing: Connected and inactive
 - Quick flashing: Transmitting/receiving data
 - Orange pulse: Indicates high-speed data transfer rate
 - Green pulse: Indicates full-speed data transfer rate
- **Operating Temperature**
 - 0° C to +50° C (32° F to 122° F)
- **Storage Temperature**
 - 20° C to +60° C (-4° F to 140° F)
- **Vibration**
 - Operating: 5 G, 10 to 500 Hz
- **Shock**
 - Operating: 55 G, 11 ms
- **Maximum Altitude**
 - Operating: 6,096 m (0 to 20,000 ft.)
 - Non-Operating: 12,192 m (0 to 40,000 ft.)
- **Connectivity**
 - USB Port Type A

¹ A high-speed USB 2.0 interface is required for high-speed operation. Otherwise, PNY Attaché employs full-speed operation.

² Operates under the USB 1.1 protocol only. Also requires driver.





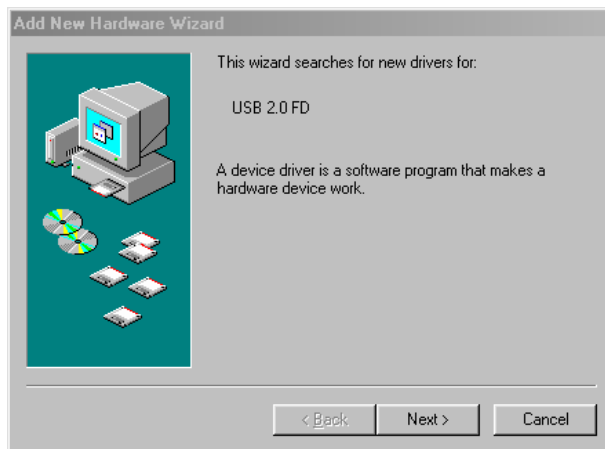
2 HOW TO INSTALL

2.1 Windows 98/98SE Install Driver

Caution: Please install driver first before you plug in the device!!!

Please follow these instructions

1. Download the file « win98se_driver » onto your computer.
2. Extract the file « win98se_driver » into a directory of your choice (For example: C:\temp\).
3. Connect the PNY USB Flash Drive to an available USB port on your computer.
4. The following « Add New Hardware » window will appear. Click "**Next**" to start the Installation.



5. Select « Search for the best driver for your device (Recommended) » then click « **Next** ».





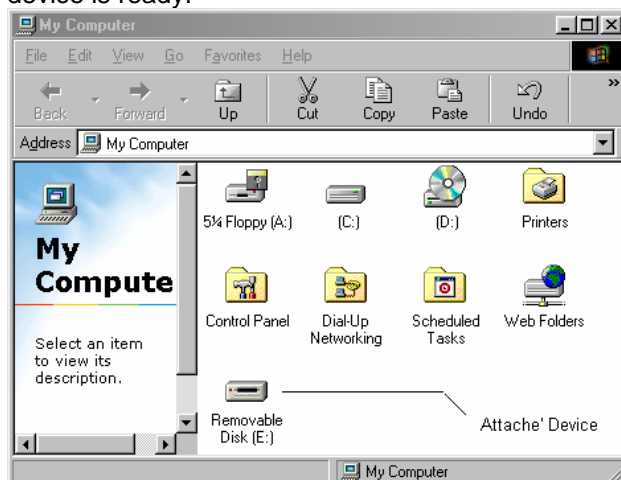
6. Select « Specify a location », and use the browse button (or manually type in the information) to specify the directory in which you extracted the files in step 1, (ex C:\temp), then click « **Next** ».



7. Windows is now ready to install the driver for your device. Click « **Next** » to continue, then click « **Finish** » to complete the installation.



8. A new Removable Disk drive (drive letter may vary) will be added to « My Computer ». The PNY USB device is ready.





2.2 Windows 2000/ME/XP

For Windows 2000/ME/XP operating systems, no driver is required. Simply plug the device into the USB port of the PC and the operating system will automatically recognize the device with its built-in driver (USB Mass Storage Class Driver). Click on the My Computer icon and look for an icon labeled as the removable disk. Click on it and begin working.

2.3 Mac OS 8.6/9.x/10.0.x/10.1.x/10.2.x

For MAC 9.x and higher, no driver is required for these operating systems. Simply plug the device into the USB port and the system will automatically find it. The Attaché will appear as Attaché20 on the desktop. MAC 8.6 can support the Attaché by downloading and installing the USB Mass Storage Device driver/patch from www.apple.com.

2.4 Linux Kernel 2.4.x



Again, no driver is required for this operating system.


1. Plug in the device.
2. Please check whether it had been enumerated in file `/proc/scsi/scsi`. If not please check whether modules had been loaded, i.e.: `usb-storage`, `scsi_mod`, `sd_mod`, ..., by using `"/sbin/lsmmod"`. If does not become root or use `sudo` with `"modprobe usb-storage"`.
3. If the device is enumerated in `/proc/scsi/scsi`, then it is OK to mount the Attaché to existed desired directory with `"mount/dev/sda1 <desired directory>"`. If there is no partition existed, please omit the digit. "a" means first LUN (Logical Unit), then "b", "c", ... and the digit means the partition number. If fail, please send us the output of `'dmesg'` and make sure those messages are collected after Attaché is plugged in.
4. You may use "Control Center" from Gnome -> Mount Points (left side) -> Hard Drive and select the appropriate device and partition, specify the mount point (existed directory) and others, i.e. `uid`, `gid`, `permission`, ..., of course you need root privilege. Suggest you un-mount it to avoid error messages on the next booting.
5. To eject, use `"eject <desired directory>"` to flush the buffer and clear the mount information.
6. After mounting the Attaché, you may do any file operations on it.
7. Some latest distributions may automatically mount the USB device on the desktop.
8. If there is any problem, please attach the `"dmesg"` output and/or `/var/log/messages`.



3 HOW TO USE THE ATTACHE

The PNY Attaché is easy to use. The instructions on how to use the Attaché on Windows 98/98SE /ME/2000/XP/Mac OS 8.6 or above are shown below:

1. Turn on your computer.
2. Plug the PNY Attaché into the USB port of the computer. For Windows users, the “Removable Disk” symbol  should appear in “My Computer. Under Windows 2000/ME/XP/, the USB monitor icon  will appear in the system tray of the taskbar. For Mac users, a device icon labelled as Attache20 will appear on the desktop.
3. The LED of the Attaché will be flashing rapidly while the write or read action is processing.
4. To exit from the process and to unplug the PNY Attaché from the USB port of the computer, please follow the steps below:

- Windows 98/98SE:** Wait at least 5 seconds after the Attaché’s LED stops flashing rapidly before removing the device from the USB port. The Removable Disk symbol disappears automatically.
- Windows 2000/ME/XP:** Click the icon  in the system tray of the taskbar. A “Stop USB Mass Storage Device - Drive (E :)” pop- up list should appear next to the icon. Click on the pop-up list and a “Safe to Remove Hardware” window will appear. Click “OK” to close this window and then unplug the Attaché.
- Mac OS 8.6 or above:** Drag the device icon to the *Trash Can*, confirm remove, wait until the LED dimmed and flicker slowly, then remove from the USB port.



4 FAQs

To see the latest FAQs, go to PNY website www.pny.com. A few of these FAQs are listed below.

Q1: After the installation is complete, why can't I find the USB device correctly?

A1: Check USB controller option in the BIOS settings, make sure it is enabled.

Q2: What can be stored on my Attaché?

A2: Once your Attaché is plugged into your system, it works just like your hard drive. So any type of data can be stored, erased, copied, or read from it like music files, documents, emails, pictures, movies, the list of different uses for USB Flash Disk is endless.

Q3: Does the Attaché require a driver to be manually installed on each system?

A3: Windows ME, 2000, and XP all support without any need to install drivers. Attaché is 100% plug and play. Just insert your Attaché and your computer sees as a new hard drive. On Windows 98 the Attaché requires the installation of a driver that can be downloaded from our website. The Attaché currently does not have support for Windows 3.11, Windows 95, Windows NT, or Windows CE.

Q4: My Windows ME / 2000 / XP cannot detect my device, what can I do?

A4: Since there is no driver required for these operating systems, the device uses the built-in driver (USB Mass Storage Class Driver) from these operating systems. If your operating system cannot find the device, then it is very likely that the built-in driver files were missing or corrupted; please try to recover these files from other computer or from the original Windows operating system CD. Should you still having problem, please try the method in A1, or contact one of our technical staff.

Q5: Can the Attaché be shared over a network?

A5: Yes, Attaché offers all the functions of a normal hard drive.

Q6: What is the function of the Attaché's LED?

A6: When the Attaché is inserted into the USB port and the LED lights up, it means that the computer has detected the Attaché. The LED would flicker thus indicating file transfer. **DO NOT REMOVE THE Attaché** at such a time as this may cause loss of data or damage TO THE FAT table. However if the unit is not functional, the user can reformat the Attaché without causing any damage to the hardware.

Q7: Can viruses infect the Attaché?

A7: Yes, Attaché is designed to function as storage device and therefore, behaves like one. Like any other storage device, you can scan, protect, or remove any viruses from it using any anti-virus software.



HOW TO CONTACT US

USA

New Jersey

299 Webro Road
Parsippany, NJ 07054
Phone: 800-769-7079
Fax: 973-560-5590
<http://www.pny.com>

Contact PNY Technical Support @

1-888-316-
1193
or:

technical@pny.com

EUROPE

France

Zac du Phare
Rue Joseph Cugnot, BP-181
Cedex, Merignac 33708
Phone: 33-5-5613-7575
Fax: 33-5-5613-7577
<http://www.pny-europe.com/uk/>

Germany

Adenauer Str. 20
D - 52146 Würselen
Phone 011-49 (0)2405/4826-0
Fax 011-49 (0)2405/4826-199

ASIA

Taiwan

No plate: 4F~1, No. 287, Guang-Fu Rd. 2 Sec.
Hsin Chu, Taiwan
Phone: 011-886-3-5163290
Fax 011-886-3-5163287